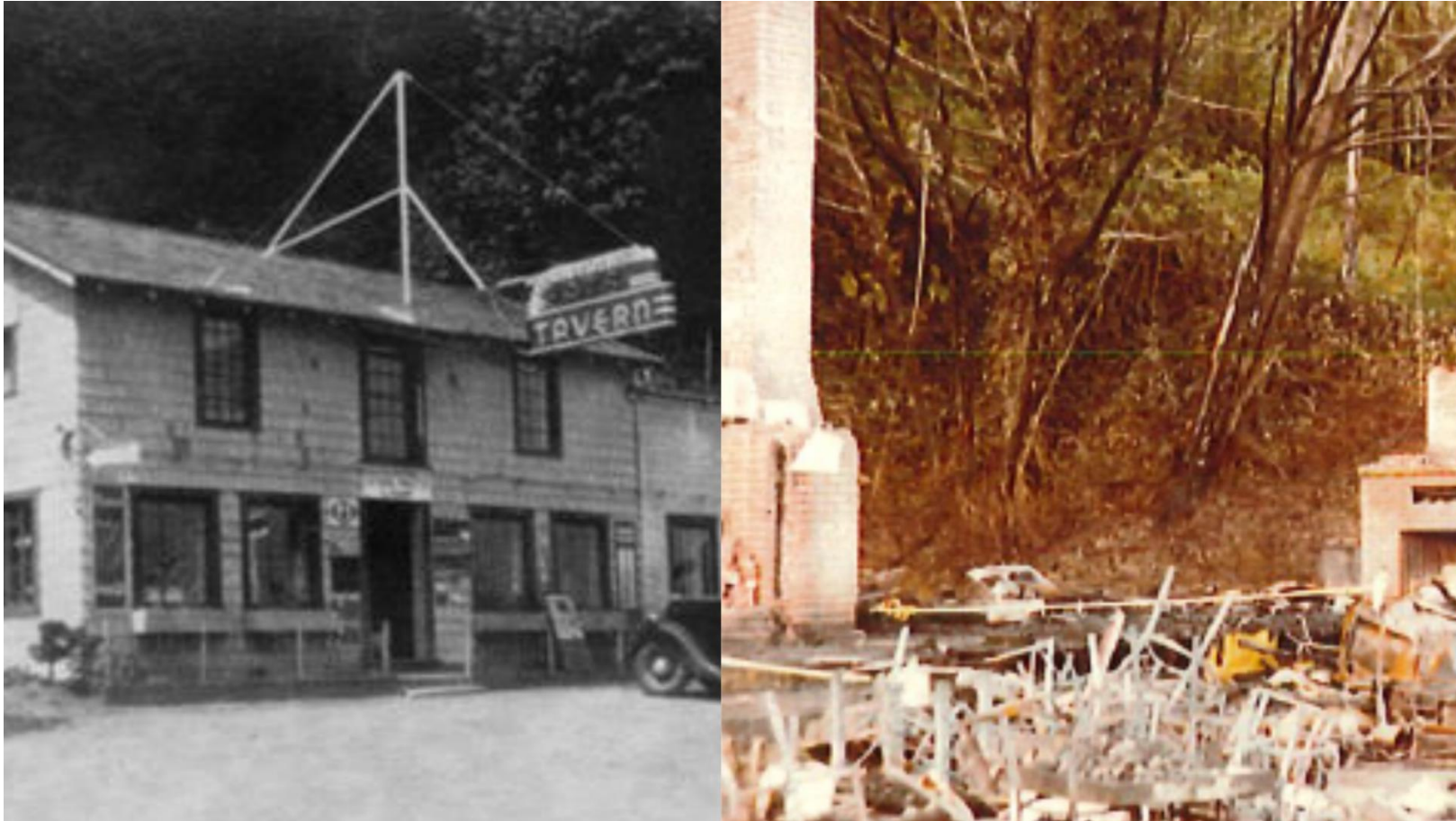


# Hold On Timber Sale

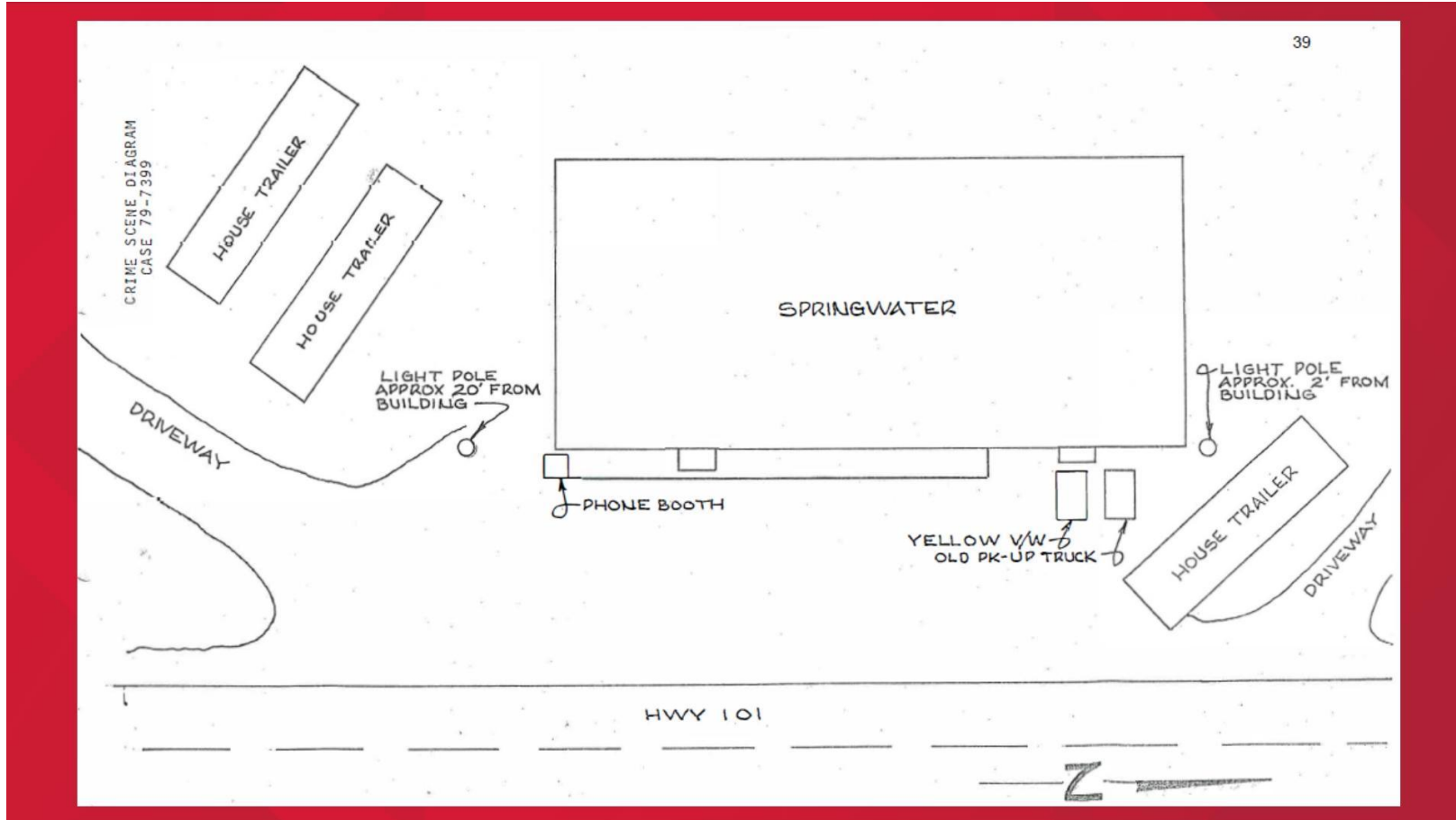
March 2026 Update

*Prepared by David Galle*

# *Springwater Tavern arson/murder, October 1979*



# Springwater Tavern site map



# *Springwater Tavern site today*



# *Grose Construction Co, Morton, WA*

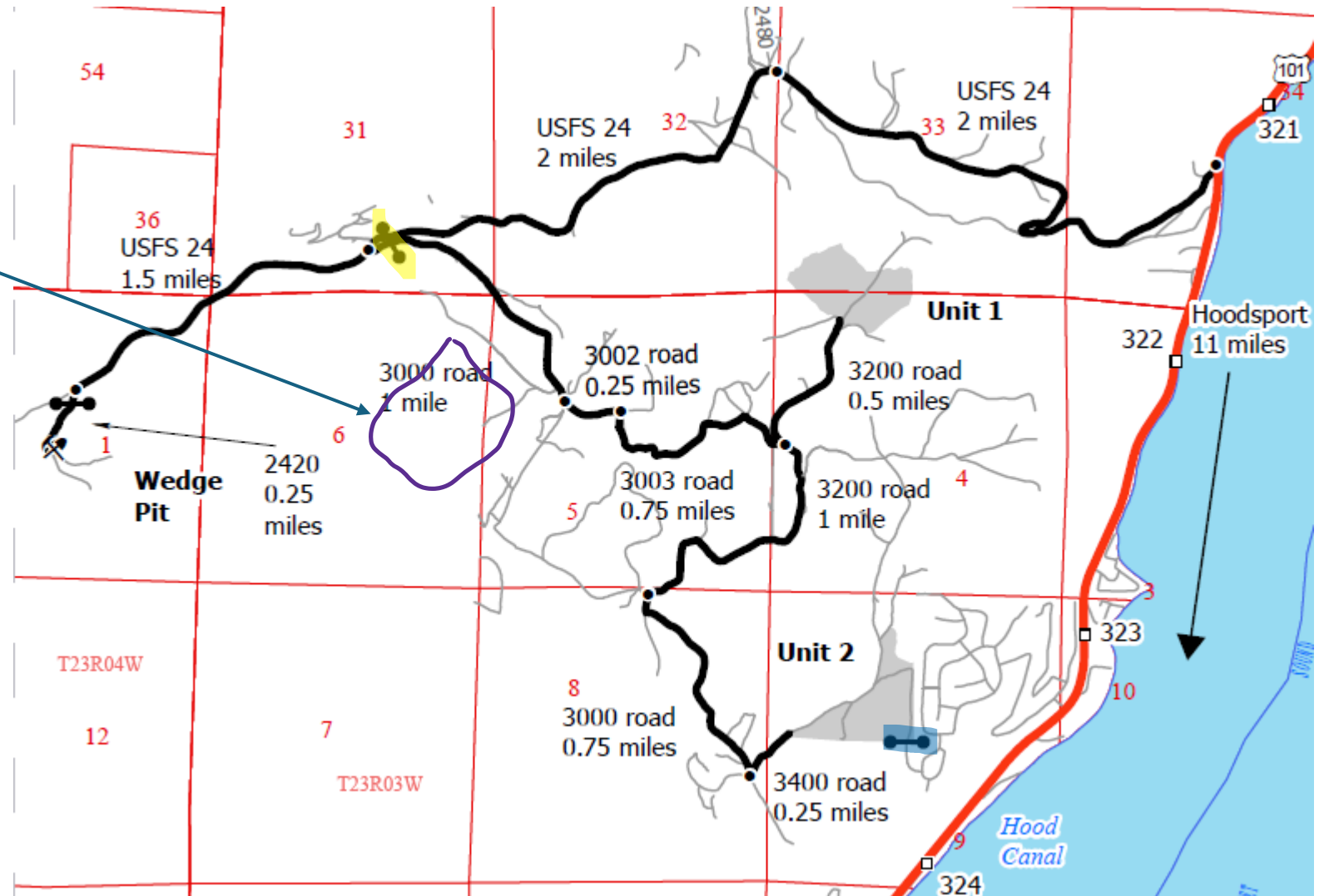
- Grose has been confirmed as the high bidder for Hold On sale.
- Logging and road plans received by DNR, approval pending.
- Start date of road and logging operations uncertain.
- DNR will notify CS before operations begin in Unit 2 (next to CS).
- DNR was reminded that CS members use all of the forest between CS and USFS 24 for recreation, so we need to be alerted when operations begin anywhere in the area, including Unit 1 and roadbuilding – also that the population of CS is much larger during the summer than the rest of the year.

# Timber sale data – Dec 25/Jan 26

December 2025 timber sales				
sale	harvest acres	minimum bid	value/acre	
rocky road	124	\$854,000	\$6,887	
copper head	99	\$1,218,000	\$12,303	
dendrophobia	38	\$867,000	\$22,816	
hold on	92	\$323,000	\$3,511	
tuckered out	54	\$1,027,000	\$19,019	
beets	72	\$770,000	\$10,694	
flea flicker	145	\$985,000	\$6,793	
hamski	106	\$655,000	\$6,179	
January 2026 timber sales				
spruce almighty	192	\$921,000	\$4,797 (includes thinning - tonnage)	
lost glove	155	\$842,000	\$5,432 (64% white woods)	
closer	177	\$2,348,000	\$13,266	
leggo my loggo	120	\$922,000	\$7,683	
NO BIDS	hope fire salvage	126	\$640,000	\$5,079 (Stevens County - tonnage)
	ghost	142	\$2,482,000	\$17,479

# Hold On Timber Sale Vicinity Map

Serendipity Unit 1  
timber sale area  
(approximate)



# Serendipity All Unit cruise data

MBF = thousand board feet  
 DBH = diameter breast height

DF = Douglas-fir – 88%  
 WH = Western Hemlock  
 RA = Red Alder  
 MA = Maple  
 RC = Western Redcedar – 1%  
 BC = Black Cottonwood

Smaller ring count = faster growth

Grades in descending order of quality –  
 Special Mill, #2, #3, #4 Sawlogs, Utility

## Timber Sale Notice Volume (MBF)

Sp	DBH	Rings/In	Age	MBF Volume by Grade					
				All	Spec Mill	2 Saw	3 Saw	4 Saw	Utility
DF	16.0	7.0		1,970	41	855	851	217	6
WH	15.0			136		21	94	20	2
RA	10.3			71		5	4	53	8
MA	12.8			46		13		25	8
RC	15.3			19			10	9	
BC	28.7			9		9		0	
ALL	15.3	6.8		2,250	41	902	958	324	25

# Hold On All Unit cruise data

MBF = thousand board feet  
 DBH = diameter breast height

DF = Douglas-fir – 94%  
 WH = Western Hemlock  
 RC = Western Redcedar – 1%  
 WP = Western White Pine  
 RA = Red Alder

Larger ring count – slower growth

Grades in descending order of quality –  
 (No Special Mill) #2, #3, #4 Sawlogs

## Timber Sale Notice Volume (MBF)

Sp	DBH	Rings/In	Age	MBF Volume by Grade				
				All	2 Saw	3 Saw	4 Saw	Utility
DF	13.9	9.1		1,242	291	611	340	
WH	14.4			53	6	41	5	0
RC	12.4			14		5	10	
WP	13.5			11		9	2	
RA	10.0			3			3	
ALL	13.7	9.1		1,323	297	667	360	0

# Hold On Unit 2 cruise data

MBF = thousand board feet  
 DBH = diameter breast height

DF = Douglas-fir – 96%  
 WH = Western Hemlock  
 RC = Western Redcedar  
 WP = Western White Pine  
 RA = Red Alder

Larger ring count – slower growth

Grades in descending order of quality –  
 (No Special Mill) #2, #3, #4 Sawlogs

## Unit Sale Notice Volume (MBF): HOLD ON U2

Sp	DBH	Rings/In	Age	MBF Volume by Grade			
				All	2 Saw	3 Saw	4 Saw
DF	11.2	9.3		523	27	248	248
WH	12.5			16		14	1
WP	13.0			6		5	1
RA	10.0			3			3
ALL	11.2	9.3		547	27	267	253

# *Landowner cover letter from DNR – June 21, 2023*

*Dear Landowner:*

*Because you own land near land managed by the Washington State Department of Natural Resources (DNR), you may be interested in a timber harvest we are planning nearby.*

*...*

*Forest road work will be performed under the Hold On timber sale contract, which will include **maintenance of the forest road identified as the evacuation route for the Colony Surf community.***

# Hold On map (attached to June 2023 letter)

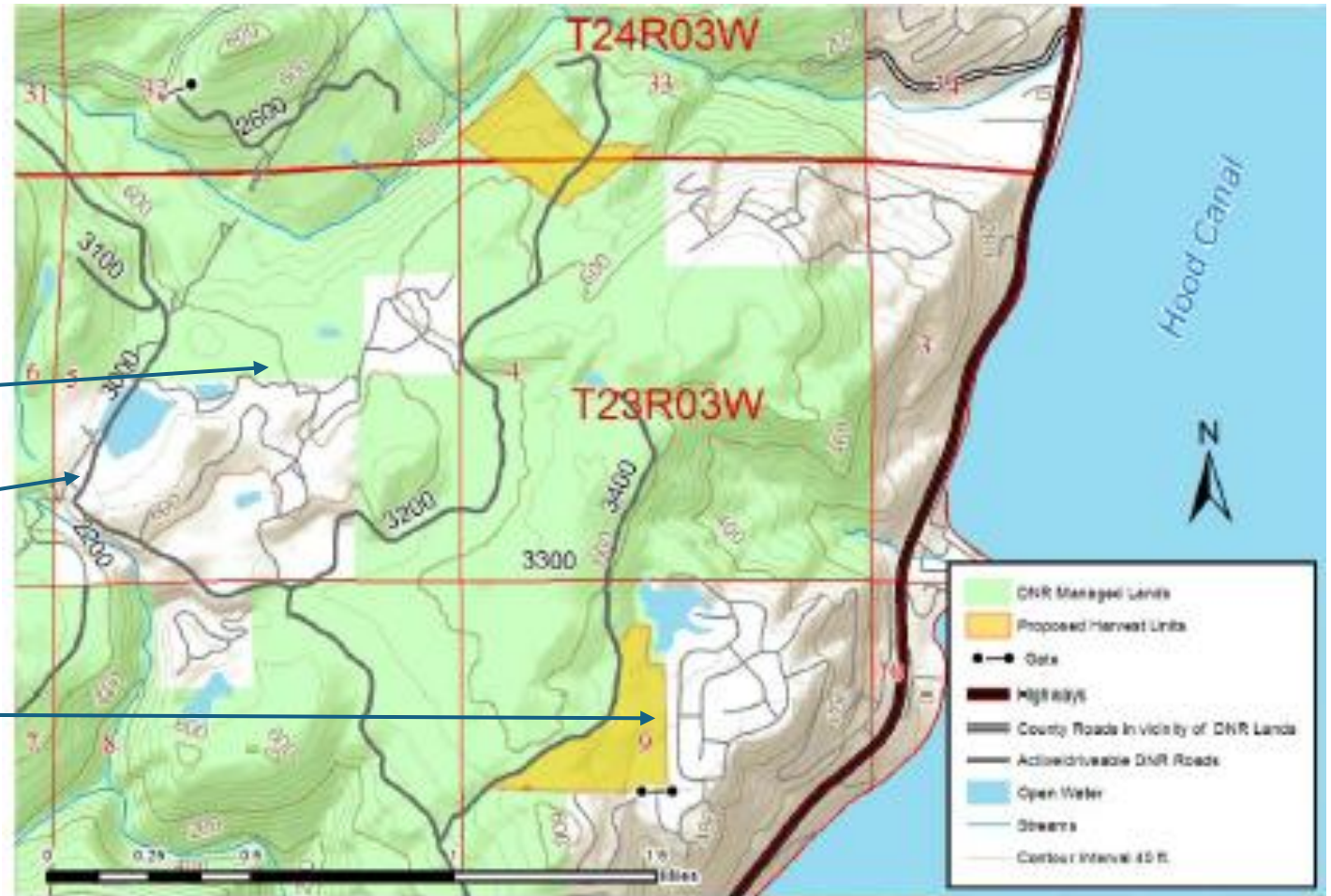
Note abundance of DNR lands  
(green area)

Note existing access route on  
3000 is shown as active/drivable

No 3000 / 3200 connector

No wetlands or culvert identified

3410 not shown



## *Hold On fact sheet (attached to June 2023 letter)*

*This sale is estimated to generate **\$835,000** for community services, depending on market conditions.*

(January 2026 minimum bid = \$323,000, high bid = \$536,666)

(sale volume = 1,323 mbf)

(minimum bid of \$323,000 = \$244/mbf)

(2023 estimate of \$835,000 = \$631/mbf)

(high bid of \$536,000 = \$406/mbf) (**-36%**) from estimate)

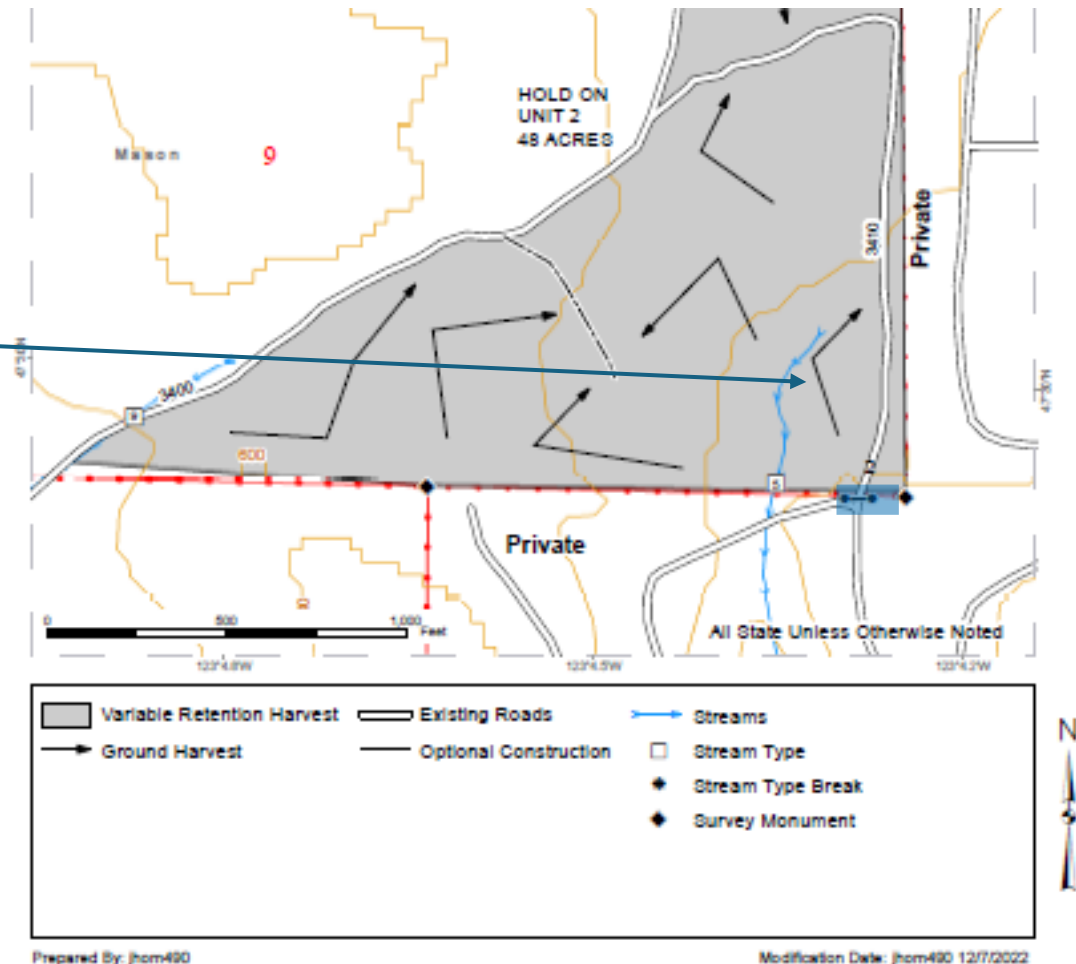
# *Recent timber market conditions*

- DNR timber prices averaged \$391/mbf from FY2022 thru 2025.\*
- Normally, private timber is exported to lucrative foreign markets, while DNR timber is export-restricted to preserve local mill jobs.
- Due to the current trade war, foreign buyers have stopped buying, so private logs are sold on domestic markets, reducing prices.
- DNR now expects FY26 average sales price of \$340/mbf (-13%).\*
- Reduced sales prices mean lower revenues to the trusts and lower management fee income, possibly requiring a legislative appropriation to fund development of future timber sales.

# Unit 2 Draft Logging Plan map 12-7-2022

Only one spur shown on this map

Note direction of yarding arrow toward 3410

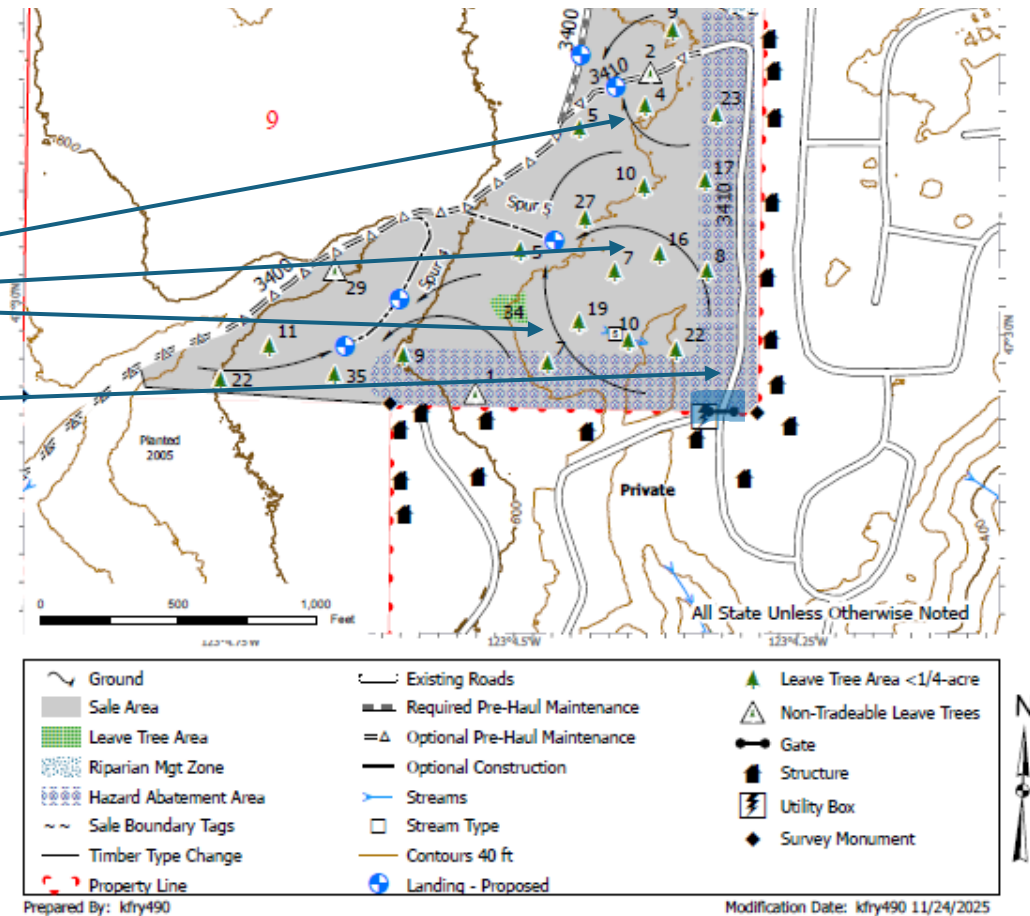


# Unit 2 Final Logging Plan map 11-24-2025

Second spur added, location of spurs altered

Note yarding arrows away from 3410

No pre-haul maintenance for the first 1,509 feet of 3410 from blue gate, since it's not part of the haul route



# Timber sale data – Dec 25/Jan 26

December 2025 timber sales				
Sale	harvest acres	minimum bid	value/acre	
rocky road	124	\$854,000	\$6,887	
copper head	99	\$1,218,000	\$12,303	
Dendrophobia	38	\$867,000	\$22,816	
hold on	92	\$323,000	\$3,511	
tuckered out	54	\$1,027,000	\$19,019	
Beets	72	\$770,000	\$10,694	
flea flicker	145	\$985,000	\$6,793	
Hamski	106	\$655,000	\$6,179	
January 2026 timber sales				
spruce almighty	192	\$921,000	\$4,797 (includes thinning - tonnage)	
lost glove	155	\$842,000	\$5,432 (64% white woods)	
closer	177	\$2,348,000	\$13,266	
leggo my loggo	120	\$922,000	\$7,683	
NO BIDS	hope fire salvage	126	\$640,000	\$5,079 (Stevens County - tonnage)
	ghost	142	\$2,482,000	\$17,479

## *Timber sale-related questions for DNR*

- Post-haul maintenance details on 3400/3410 roads?
- What happens to the slash collected in hazard abatement area? Burned onsite, hauled away (biomass/hog fuel), left in piles?
- Potential noise from workers if camping onsite in Unit 2 during harvest – generators, etc?
- Post-harvest use of herbicides near residential area? Similar blend to what was used in the Hamma Fire burn area prior to replanting?
- etc

## *Possible meetings with DNR/Grose pre-harvest*

- DNR meeting – to address concerns of all members
- Grose meeting – in particular to address concerns of members living next to sale area, and to allow Grose to see our area before they start operations
- If problems/disputes arise during the sale, it would be helpful to have met all the participants in person in advance
- Also a possible conversation with Grose to do road work on 3410 after harvest (approved by DNR and paid for by CS), depending on the condition of the road then

## *Update – Hamma Fire area, July 2025*

*(see maps following)*

- DNR plans to replant the 66 acre Hamma Fire area in Spring 2026.
- The location of the Hamma Fire is easily accessible to see these burn and replanted areas recover in future years.
- USFS 2480 between the Hamma Hamma River bridge and the Hamma Fire site passes through the Maple Fire (2018) burn area, and that recovery can also be seen. This section of National Forest road is rough, with numerous large chuckholes.
- USFS 2421 (unmarked) goes uphill from 2480 about ¼ mile east of the bridge, over water bars to the Infrared salvage sale area (2019).
- 2480 between Hamma Fire site and USFS 24 is in better shape.



# *Maple Fire/Infrared fire salvage sale – background*

- The Maple Fire started on August 3, 2018 and burned into late October on over 2,800 acres of National Forest land and about 440 acres of DNR land.
- In 2019, DNR identified 174 acres of its burn area suitable for salvage logging after excluding leave tree areas, riparian areas, unstable slopes, etc. Some snags were also left. Other parts of the Maple Fire burn area on DNR land had only minimal fire damage to standing timber and were not included in the sale.
- Minimum bid \$1,709,000, high bid \$1,777,360 (\$10,215/acre).
- The Infrared sale area was replanted in 2022.

# *Maple Fire burn area/Infrared salvage area (2026)*

Mosaic of burned/unburned areas in background is on National Forest land

DNR land continues uphill to the right of photo

Average of 8 live/dead leave trees per acre in middle background

Note burn scars on live trees

Replanted Douglas-fir in foreground are 4 years old



# *Maple Fire burn area/Infrared salvage area (2026)*

Live trees with burn scars on left

Hamma Hamma Balds  
Natural Area Preserve middle right

Replanted Douglas-fir along road



# *Infrared fire salvage sale cruise report*

Species	Avg DBH	Ring Count	Total MBF	MBF by Grade								
				1P	2P	3P	SM	1S	2S	3S	4S	UT
Douglas fir	15.6	9	5,098					2,695	1,449	880	74	
Hemlock	12	8	181						50	74	46	11
Red cedar	10.8		143							35	108	
Sale Total			5,422									

Note the large Douglas-fir volumes (94% of total MBF), and nearly 10x the #2 Sawlog volume of the Hold On sale (291 mbf).

## *Infrared fire salvage sale cruiser comments*

*This is a predominately DF stand with some WH, RC. This unit was part of the Maple fire in the summer of 2018. **A ground fire affected the majority of the unit.** There are a couple areas the fire got in the crowns, but this is limited. The fire affected the roots and the lower part of the boles [tree trunks]. **It did not burn beyond the bark thickness on the DF.** Some of the WH and a lot of the RC had lower damage from the fire. **There was almost no defect deductions for fire damage.***



# *USFS 2421, Infrared salvage sale area (2026)*

Border of Jefferson timber sale, 2015

Hamma Fire site, 2025

Drivable water bar (partially eroded)

Note good condition of road here,  
thanks to water bars



# *Infrared Fire salvage sale slash piles (2026)*

Variable retention harvests on horizon

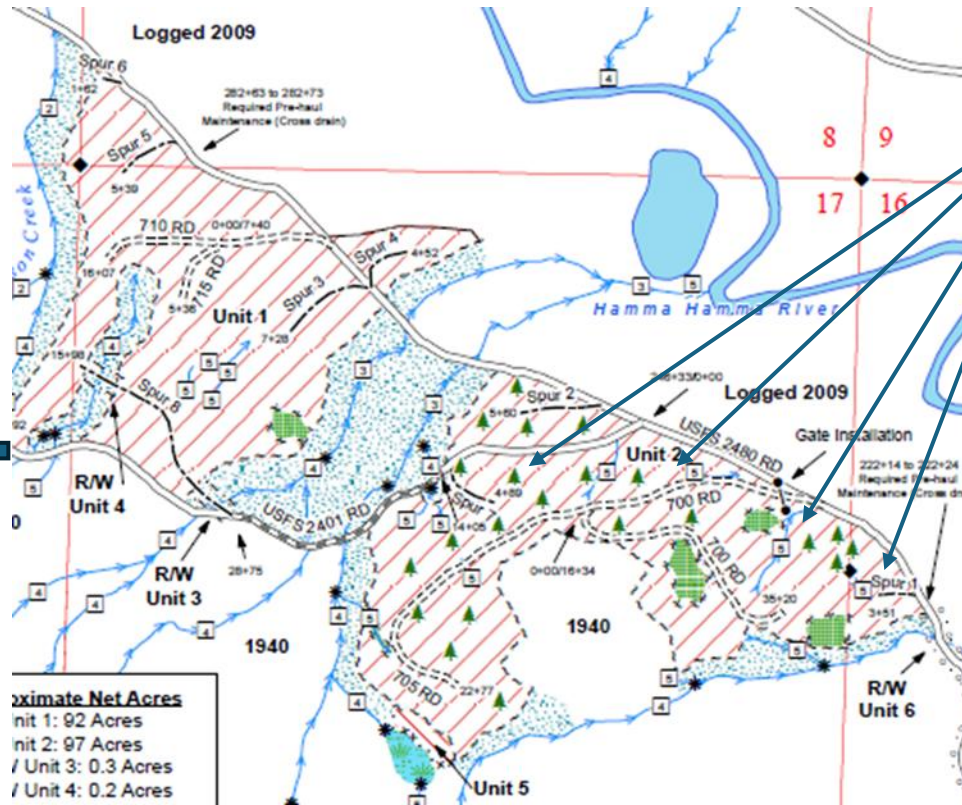
Note leave trees in salvage area

Note replanted trees, age 4 years



# Jefferson timber sale (2015), Hamma Fire (2025)

USFS 2401 continues along Jefferson Creek to Maple Fire ignition site – with more chuckholes



Hamma Fire area, 66 acres in Unit 2

To USFS 24, US 101 (2480 from here is in much better condition)

# *Hamma Fire burn area (2026)*

Replanted Douglas-fir  
in foreground is 8 years old



# *Hamma Fire burn area (2026)*

Note partially burned slash  
from Jefferson timber sale  
in burn area



# *Hamma Fire burn area (2026)*



# *Hamma Fire burn area (2026)*

Fireline on 2480 Road,  
burned area on right



# *Hamma Fire burn area (2026)*

Fireline on 2401 road  
showing burn area on right,  
unburned area on left



# *Hamma Fire burn area (2026)*

Fire damaged sign on 2401,  
facing northeast at  
intersection with 2480

Left turn (driving northwest)  
– 2 miles of chuckholes, 7 miles  
of pavement (on 25) to US 101,  
then 5 miles to CS  
(14 miles total distance)

Right turn (driving southeast)  
– 8 miles of dirt road (on 2480 in  
better condition) to USFS 24 and  
US 101, then 2 miles to CS  
(10 miles total distance)



# Hamma Fire burn area – prep for replanting

Aquaneat

Oust Extra

Esplanade 200 SC

Premium MSO

Applied 10-29-2025

Access restricted  
for 48 hours after  
application



# USFS 25/2480/24 road loop

Hamma Hamma River bridge

Infrared fire salvage area

Hamma Fire area

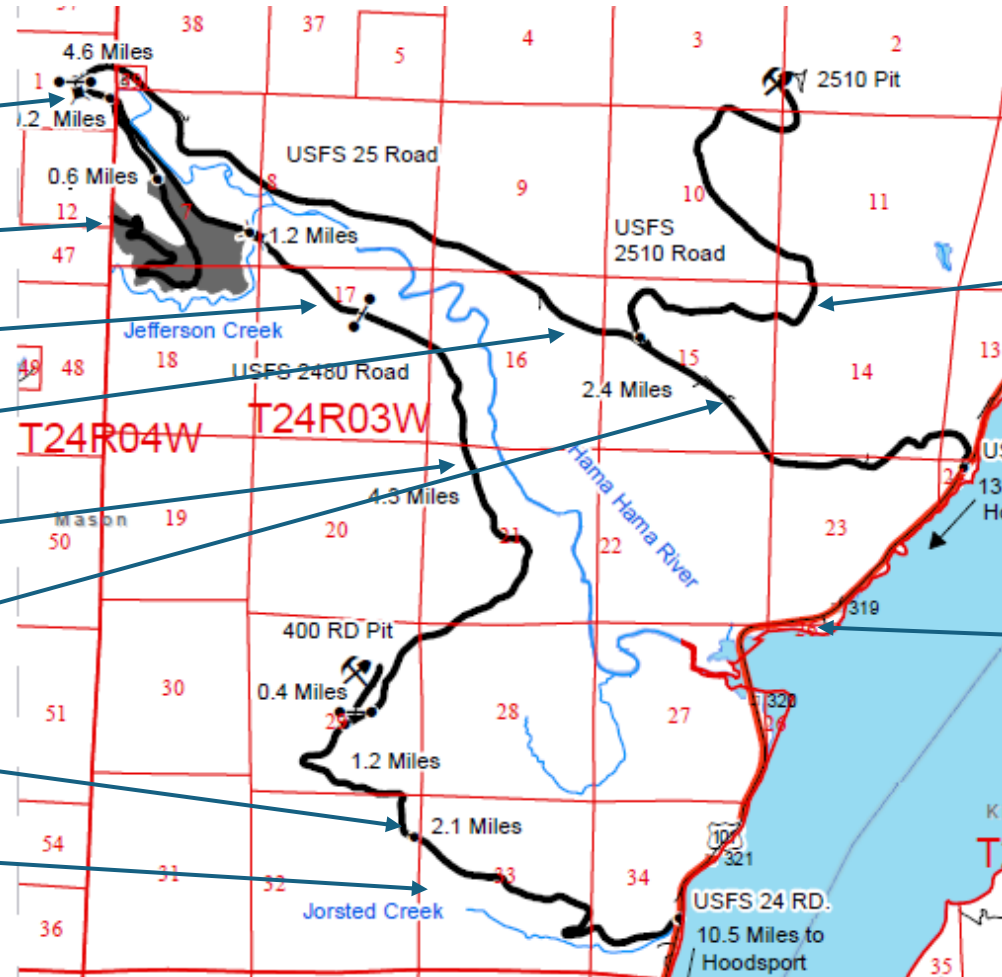
USFS 25 (all paved)

USFS 2480 (all dirt)

BPA powerline crossings

USFS 24 (all dirt)

(Both gates on 2480 Road are open, installed during Maple Fire closure)



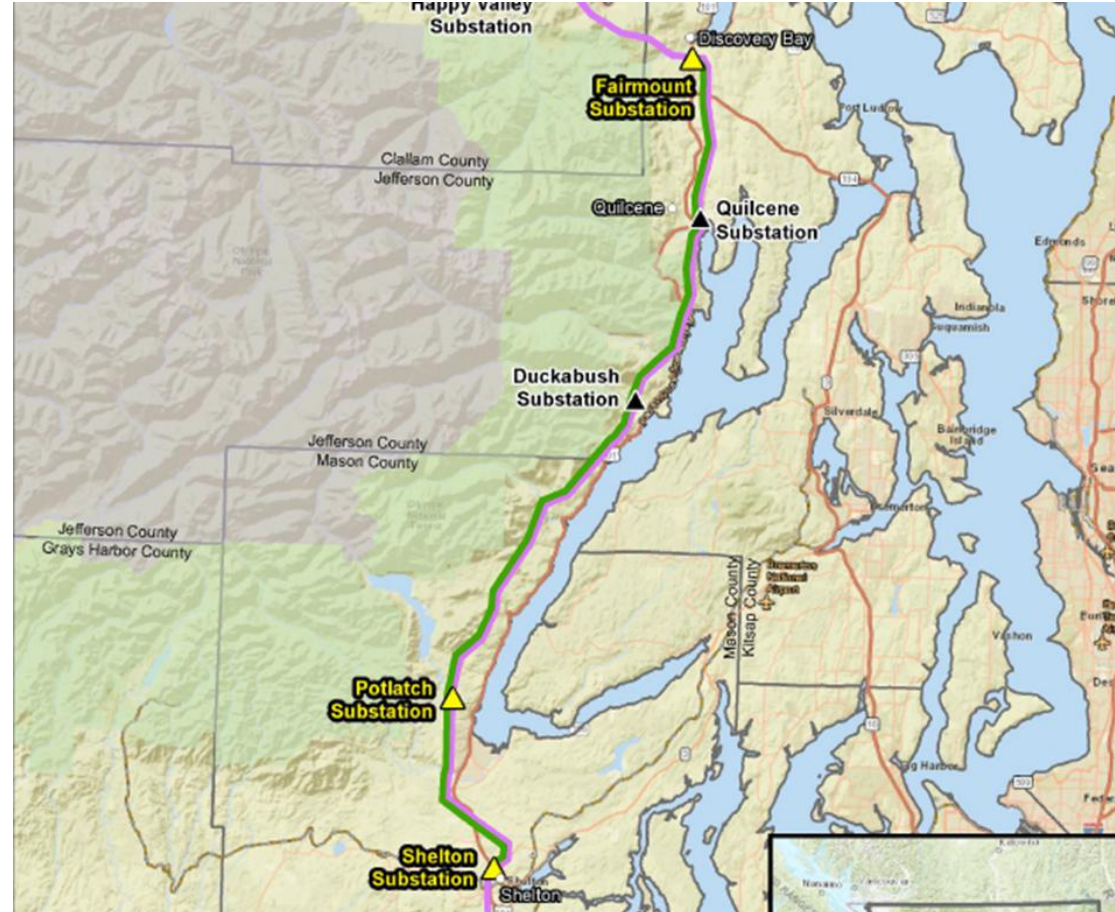
All of 2510 Road is closed

Eldon Store

# *BPA Shelton-Fairmount #1 transmission line rebuild project update*

- Rebuild of SF1 from the Shelton to Duckabush substations is scheduled to start in February 2027, depending on weather, after the end of the winter heating season.
- Shelton/Duckabush segment is expected completion date is November 2027, then rebuild Duckabush/Fairmount segment of SF1 in 2028.
- Our power outage at 2:40am March 16<sup>th</sup>, duration over 2 hours, was due to a failure of SF1 line, affecting the Potlatch, Duckabush, and Quilcene distribution substations.

# *BPA Shelton-Fairmount #1 rebuild project update*



*Thursday the 12<sup>th</sup>, Coquihalla Highway, BC*



*Thursday the 12<sup>th</sup>, Coquihalla Highway, BC*



*Friday the 13<sup>th</sup>, I-90, Easton, WA*



Questions?